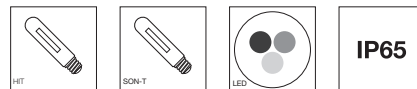


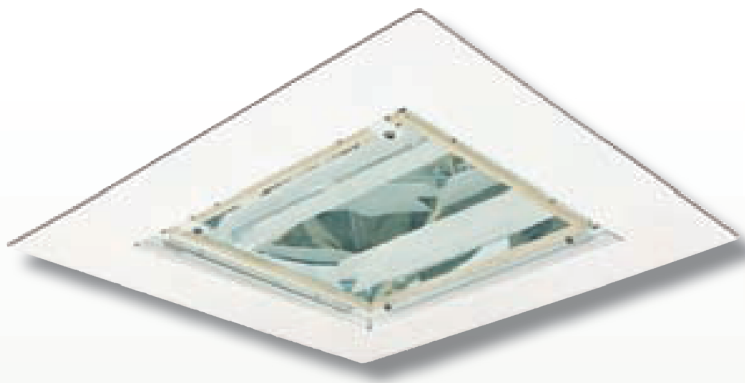


OCTANE

CANOPY LIGHTING



- IP65 (Underside)
- Toughened Hinged Glass
- Polished Aluminium Reflector
- Asymmetric or Symmetrical Reflector
- Tubular SON or Metal Halide
- Integral Control Gear
- Two Part Construction
- LED Option



DESCRIPTION

Fabricated steel enclosure sealed to IP65 from below & IP44 from behind. It has a polished aluminium reflector with cross blade white louvre straps, two part construction flange plate & body, white polyester paint finish.

APPLICATION

Petrol Stations, Garage Forecourts, Under Canopies, Walkways etc

RANGE AVAILABLE

Catalogue No.

OCT250S
OCT400S

OCT250MH
OCT400MH

Suffix

/RM
/ASY
/SYM
/RLY

*LED option on request

Description

250w SON-T
400w SON-T

250w HIT
400w HIT

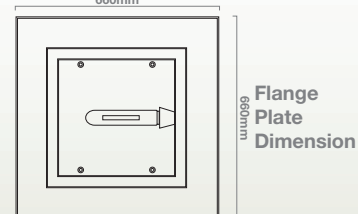
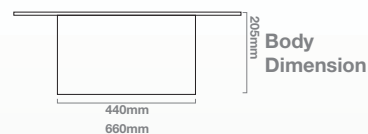
Recessed Mounting
Asymmetrical Reflector
Symmetrical Reflector
Warm-Up Relay

Weight (Kg)

8 Kg
9 Kg

8 Kg
9 Kg

Dimensions



Cut out 480mm x 480mm
Recessed version